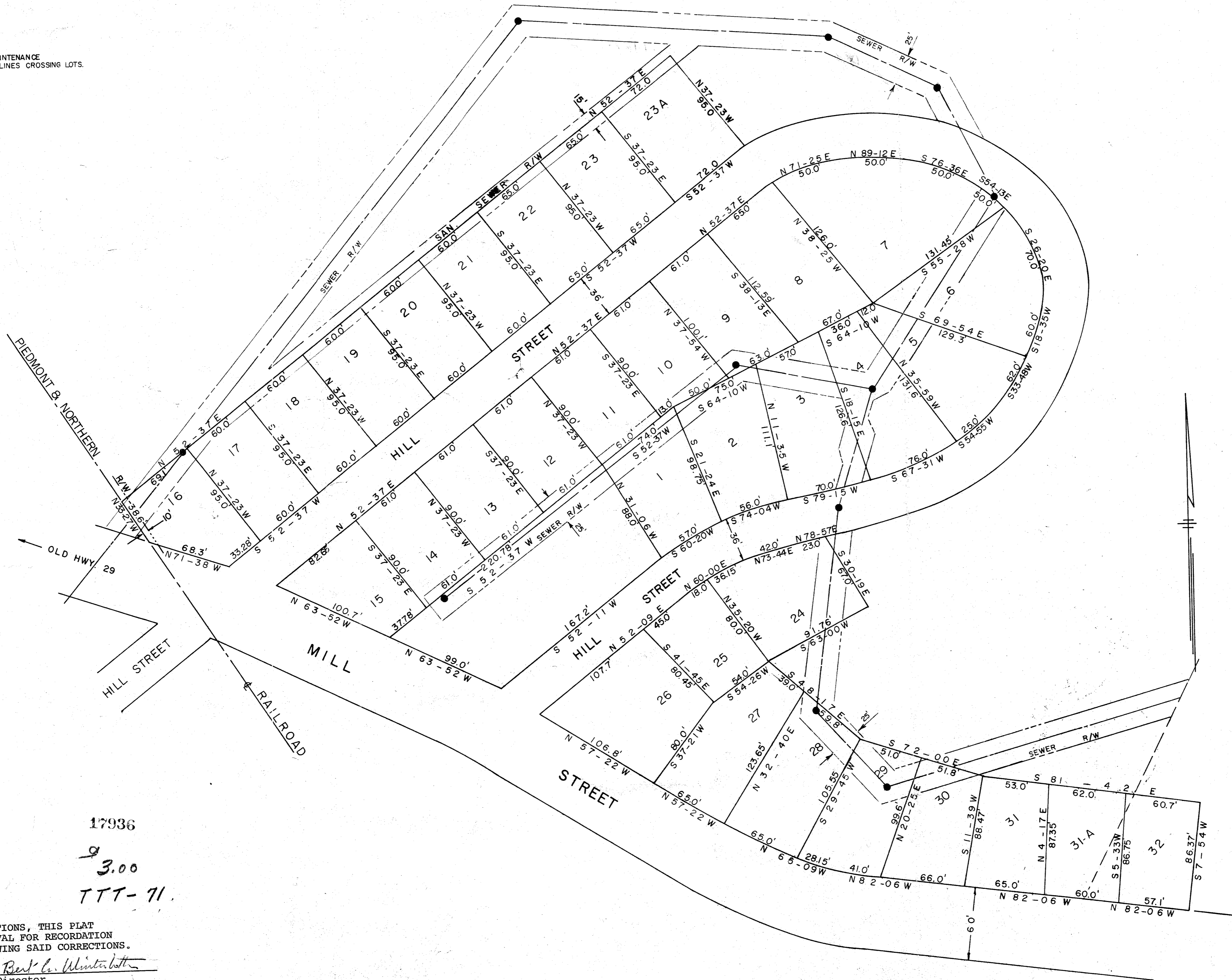


NOTE.
AN EASEMENT IS RESERVED FOR MAINTENANCE
OF ALL EXISTING SERVICE & SEWER LINES CROSSING LOTS.



FILED
GREENVILLE CO. S.C.
JAN 29 4 30 PM 1969
OLLIE FARRINGTON
R. M.D.

17936
3.00
TTT-71

DUE TO PLATTING CORRECTIONS, THIS PLAT
HAS BEEN GRANTED APPROVAL FOR RECORDATION
FOR THE PURPOSE OF SHOWING SAID CORRECTIONS.

January 29, 1969
Bert C. Winterbottom
Director
Greenville County Planning Commission

SECTION NO. 1
CHICK SPRINGS

TAYLORS, SOUTH CAROLINA
SCALE 1" = 50'
MAY 5, 1966
REV JULY 12, 1966
REV NOV. 30, 1966
REV LOTS 31, 31A & 32 - JAN. 12, 1968
ADDED LOT 23A OCT. 3, 1968

PIEDMONT ENGINEERS & ARCHITECTS
GREENVILLE, SOUTH CAROLINA

LEGEND
● MANHOLE & SAN SEWER LINE

#17936 Filed This 29 day of Jan 1969
And Recorded in Vol. TTT Page 71 of 430
Ollie Farrington
Register Mesne Conveyance Greenville County, S. C.